
SL Paper 1

Which structure found in eukaryotes has a single membrane?

- A. Nucleus
- B. Lysosome
- C. Chloroplast
- D. Mitochondrion

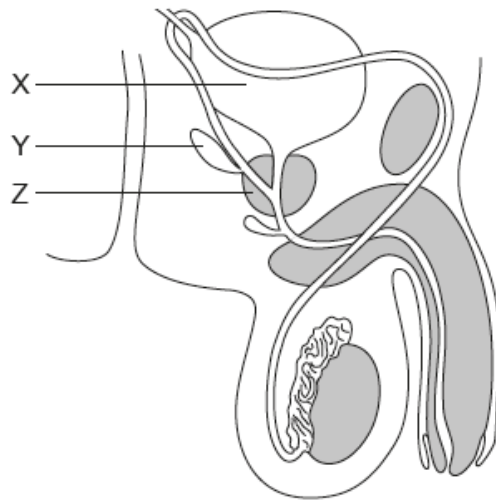
Markscheme

B

Examiners report

[N/A]

The image shows the male reproduction system.



[Source: © International Baccalaureate Organization 2015]

Where is prostate cancer likely to start developing?

- A. In X only
- B. In Y and Z only
- C. In Z only
- D. In X, Y and Z

Markscheme

Examiners report

[N/A]
